

Lancashire County Council

Employment Committee

Monday, 12th February, 2018 at 2.00 pm in Committee Room 'C' (The Duke of Lancaster Room) - County Hall, Preston

Agenda

Part I (Open to Press and Public)

No. Item

1. Apologies

2. Disclosure of Pecuniary and Non-Pecuniary Interests

Members are asked to consider any Pecuniary and Non-Pecuniary Interests they may have to disclose to the meeting in relation to matters under consideration on the Agenda.

3. Minutes of the Meetings held on 22 and 23 January 2018 (Pages 1 - 2)

To be confirmed, and signed by the chair.

4. The Localism Act 2011 - Pay Policy Statement 2018/19 (Pages 3 - 34)

5. Urgent Business

An item of urgent business may only be considered under this heading where, by reason of special circumstances to be recorded in the Minutes, the Chair of the meeting is of the opinion that the item should be considered at the meeting as a matter of urgency. Wherever possible, the Chief Executive should be given advance warning of any Member's intention to raise a matter under this heading.

6. Date of Next Meeting

The next meeting of the Committee will be held on Monday 12 March 2018 at 2.00 p.m. at County Hall, Preston.

7. Exclusion of Press and Public

The Committee is asked to consider whether, under Section 100A(4) of the Local Government Act, 1972, it considers that the public should be excluded from the meeting during consideration of the following items of business on the grounds that there would be a likely disclosure of exempt information as defined in the appropriate paragraph of Part 1 of Schedule 12A to the Local Government Act, 1972, as indicated against the heading to the item.

Part II (Not open to Press and Public)

8. Waste Company Annual Pay Review

(Pages 35 - 40)

(Not for publication – exempt information as defined in paragraphs 1, 3 and 4 of Part 1 of schedule 12A to the Local Government Act, 1972. It is considered that in all the circumstances of the case the public interest in maintaining the exemption outweighs the public interests in disclosing the information).

County Hall
Preston

L Sales
Director of Corporate Services

Lancashire County Council

Employment Committee

Minutes of the Meetings held on Monday, 22nd and Tuesday 23 January, 2018 at 9.30 am in Committee Room 'D' (The Henry Bolingbroke Room) - County Hall, Preston

Present on 22 and 23 January 2018:

County Councillor Geoff Driver CBE (Chair)

County Councillors

A Atkinson	J Mein
Mrs S Charles	D O'Toole
K Iddon	M Tomlinson
N Hennessy	

County Councillors K Iddon, N Hennessy, J Mein and M Tomlinson replaced County Councillors M Green, L Beavers, T Martin and A Ali respectively at the meetings.

1. Apologies

None.

2. Disclosure of Pecuniary and Non-Pecuniary Interests

None.

3. Minutes of Meeting held on 11 January 2018

Resolved: That the Minutes of the meeting held on 11 January 2018 be confirmed and signed by the chair.

4. Date of Next Meeting

It was noted that interviews for the position of Executive Director of Growth, Environment, Transport and Community Services would be held on 22 and 23 January 2018.

It was also noted that the next ordinary meeting of the Committee would be held on Monday, 12 February 2018 at 2.00 p.m. at County Hall, Preston.

5. Urgent Business

None.

6. Exclusion of Press and Public

Resolved: That the press and members of the public be excluded from the meeting during consideration of the following item of business on the grounds that there would be a likely disclosure of exempt information as defined in the appropriate paragraph of Part I of Schedule 12 A to the Local Government Act 1972. It was considered that in all the circumstances the public interest in maintaining the exemption outweighed the public interest in disclosing the information.

7. Executive Director of Growth, Environment, Transport and Community Services - Interviews

(Exempt information as defined in Paragraphs 1, 2 and 3 of Part 1 of Schedule 12A to the Local Government Act, 1972. It was considered that in all the circumstances of the case the public interest in maintaining the exemption outweighed the public interests in disclosing the information).

The Committee conducted interviews for the position of Executive Director of Growth, Environment, Transport and Community Services.

Each candidate gave a presentation on a designated topic which had previously been agreed by the Committee, and was then questioned by the Committee.

The Committee also received feedback from a stakeholder panel and on the outcome of a media test and personality test.

Resolved: That, subject to no objections being received from the Cabinet and to the receipt of satisfactory references, the Committee proposes to make an offer of appointment to the post of Executive Director of Growth, Environment, Transport and Community Services to Stephen Young.

L Sales
Director of Corporate Services

County Hall
Preston

Employment Committee

Meeting to be held on Monday, 12 February 2018

Electoral Division affected: None;

The Localism Act 2011 - Pay Policy Statement 2018/19

(Appendix 'A' refers)

Contact for further information:

Deborah Barrow, (01772) 535805, Head of Service Human Resources,
Deborah.Barrow@lancashire.gov.uk

Executive Summary

The Localism Act 2011 requires local authorities to prepare and publish a pay policy statement each year. The pay policy statement must articulate the local authority's approach to a range of issues relating to the pay of its workforce, particularly its chief officers and its lowest paid employees.

The pay policy statement must be approved by Full Council before it comes into force.

Recommendation

The Committee is asked to consider the proposed Pay Policy Statement for 2018/19 as set out at Appendix 'A' and recommend approval of the statement, including the proposed annual adjustment to the Living Wage for centrally employed staff for 2018/19, to Full Council.

Background and Advice

The Localism Act 2011 requires local authorities to prepare a pay policy statement each year. The pay policy statement must articulate the Council's approach to the remuneration of chief officers on appointment, subsequent progression and any use of bonus or performance related pay. In preparing pay policy statements local authorities must have regard to any guidance issued or approved by the Secretary of State. In preparing this statement for 2018/19 regard has been had to Guidance issued by the Department for Communities and Local Government.

The purpose of the statement is to provide transparency with regard to the Council's approach to setting pay for its employees (except staff in schools), in particular its chief officers. The pay policy statement must be approved by a resolution of Full Council before it comes into force on 1 April each year and must then comply with the statement for the financial year to which it relates (although amendments e.g salary related information to reflect the annually agreed pay award which has not yet been determined for 2018/19 may be made to the statement after the beginning of

the financial year to which it relates). Once approved the statement (or an amended statement) must be published in such manner as the local authority sees fit which must include publication on the local authority's website.

The pay policy statement must set out the local authority's policies for the financial year relating to:

- The remuneration of its chief officers;
- The remuneration of its lowest-paid employees, and
- The relationship between –
 - The remuneration of its chief officers, and
 - The remuneration of its employees who are not chief officers.

The statement must set out:

- The definition of 'lowest-paid employees' adopted by the authority for the purposes of the statement, and
- The authority's reasons for adopting that definition.

The statement must include the local authority's policies relating to:

- The level and elements of remuneration for each chief officer
- Remuneration of chief officers on recruitment
- Increases and additions to remuneration for each chief officer
- The use of performance-related pay for chief officers
- The use of bonuses for chief officers
- The approach to the payment of chief officers on their ceasing to hold office under or to be employed by the authority, and
- The publication of and access to information relating to remuneration of chief officers.

A pay policy statement for a financial year may also set out the local authority's policies for the financial year relating to the other terms and conditions applying to the authority's chief officers.

Updated Pay Policy Statement

A proposed Pay Policy Statement for the financial year 2018/19 is provided at Appendix 'A' to this report.

The Pay Policy Statement also takes account of the recommendations within the Hutton Review of Fair Pay in the Public Sector (March 2011) that 'government should not cap pay across public services, but should require that from 2011/12 all public service organisations publish their top to median pay multiples each year to allow the public to hold them to account.' The Statement therefore sets out the Council's aim that the pay multiple between the median FTE salary and that of the Chief Executive will not exceed 1:16.

The pay multiple between the 2017 median FTE salary and that of the Chief Executive and Director of Resources is 1:11.18, which represents a slight increase from the figure (1:10.93) reported in the last pay policy statement.

The Guidance also provides that Full Council should be offered the opportunity to consider salary packages in excess of £100k before any new appointment is made. In this regard the Pay Policy Statement sets out the grading structure for all posts at Director 1 and above. All appointments are currently made in line with this grading structure and any proposal to make a new appointment otherwise than in accordance with it would first be referred to Full Council to consider.

The Committee is also asked to note the intention to apply the uplifted Living Wage rate from 1 April 2018, subject to Full Council approval.

Consultations

The proposed Pay Policy Statement for 2018/19 has been shared with the recognised trade unions at the Joint Negotiating and Consultative Forum.

Implications:

This item has the following implications, as indicated:

Risk management

The Full Council is under a statutory duty to agree an annual Pay Policy Statement and this function cannot be delegated.

Financial

There are no direct financial implications arising from the adoption of the Pay Policy Statement.

Local Government (Access to Information) Act 1985

List of Background Papers

Paper	Date	Contact/Tel
Openness and accountability in local pay: Guidance under section 40 of the Localism Act	February 2012	Katie Dunne (01772) 535787
Openness and accountability in local pay: Guidance under section 40 of the Localism Act (Supplementary Guidance)	February 2013	Katie Dunne (01772) 535787
Reason for inclusion in Part II, if appropriate		
N/A		

Annual Pay Policy Statement 2018/19 (The Localism Act 2011)

Introduction

The Localism Act 2011 (the Act) requires the County Council to prepare a pay policy statement each year. The pay policy statement must articulate the Council's approach to a range of issues relating to the pay of its workforce, particularly its senior staff (or 'chief officers') and its lowest paid employees.

The following pay policy statement has been approved by Full Council and will come into effect from 1 April 2018. This annual pay policy statement will be subject to annual review and approval by Full Council by 31 March each year. In exceptional circumstances the statement may be reviewed/amended mid-year by the Full Council.

This statement will be published on the Council's website following each review and approval by Full Council.

The purpose of this statement is to provide transparency with regard to the Council's approach to setting the pay of its employees (excluding staff working in local authority schools) by identifying:

- The methods by which salaries of all employees are determined;
- The detail and level of remuneration of the Council's most senior staff;
- The remuneration of the Council's lowest-paid employees, and
- The relationship between the remuneration of chief officers and those employees who are not chief officers.

This pay policy statement sets out the Council's approach to pay policy in accordance with the requirements of Section 38 of the Act. Section 40(1) of the Act requires local authorities to have regard to guidance issued by the Secretary of State in performing their functions and approving pay policy statements. In preparing this pay policy statement regard has been had to the Guidance issued by the Department for Communities and Local Government in February 2012 alongside the supplementary guidance issued in February 2013.

1. The Council's Pay and Grading Structure

- 1.1 Section 112 of the Local Government Act 1972 provides that a local authority shall appoint such officers as they think fit for the proper discharge of their functions. Officers so appointed shall hold office on such reasonable terms and conditions, including conditions as to remuneration, as the local authority thinks fit.

- 1.2 In determining the pay and remuneration of all of its employees, the Council will comply with all relevant employment legislation. The Council will ensure that there is no pay discrimination within its pay and grading structures and that all pay differentials can be objectively justified through the use of job evaluation mechanisms, which directly establish the relative levels of posts in grades according to the requirements, demands and responsibilities of the role.
- 1.3 The remuneration of the vast majority of employees of the Council, other than those employee groups set out below, is in accordance with an objectively evaluated grade/role profile as determined under the Council's job evaluation scheme. The evaluated score or grade/role profile will determine the grading level paid within a locally agreed pay spine (the Lancashire Pay Spine (see Annex 1). The Council presently use the Local Government Single Status Job Evaluation Scheme (the NJC scheme) to evaluate posts up to Grade 6 on the Lancashire Pay Spine and the Hay Group Job Evaluation Scheme for other managerial and professional grades.
- 1.4 The following employee groups are not presently paid in accordance with an evaluated grade/role profile determined by the Council, unless employees have subsequently been appointed to a post that is paid in accordance with the Lancashire Pay Spine, and instead nationally or locally determined rates apply:
- Employees whose pay and conditions are determined by the Soulbury Committee;
 - Employees who have transferred from the NHS to the Council following a TUPE or statutory transfer;
 - Employees who have retained terms and conditions of employment from other employers following a TUPE transfer to the Council.
- 1.5 The Council presently adopts the national pay bargaining arrangements in respect of the revision of pay spines through any agreed annual pay increases negotiated with joint trade unions.
- 1.6 All other pay related enhancements and payable allowances/expenses are the subject of either nationally or locally negotiated and/or determined rates. The enhancements to pay and allowances/expenses payable as determined from time to time are provided at Annex 2 (Payable Enhancements) and Annex 3 (Allowances and Expenses) respectively.

- 1.7 New appointments will normally be made at the minimum of the relevant pay scale for the grade, although recruiting managers have discretion to offer a higher scale point to secure the best candidate.
- 1.8 Progression within each grade will normally be by annual increment at 1 April each year subject to the maximum of the grade. However, heads of service have discretion to advance an individual employee's incremental progression within the grade on the grounds of special merit or ability to assist in the retention of able professional or other staff.
- 1.9 Any temporary supplement to the salary scale for the grade for taking on additional duties or responsibilities must be approved in accordance with the Council's agreed policy relating to honoraria payments and acting up allowances.
- 1.10 From time to time it may be necessary to take account of the external pay levels in the labour market in order to attract and retain employees with particular experience, skills and capacity. Where necessary, the Council will ensure the requirement for such is objectively justified by reference to clear and transparent evidence of relevant market comparators, using data sources available from within the local government sector and outside, as appropriate.

2. Chief Officer Remuneration

- 2.1 The Act defines chief officers as the following (the post titles in brackets identify the relevant posts within the Council, created as part of a new senior management structure that came into effect in January 2018):
 - The Head of the Paid Service (the Chief Executive and Director of Resources);
 - The Monitoring Officer (the Director of Corporate Services);
 - A statutory chief officer (the Executive Director of Education and Children's Services, the Executive Director of Adult Services and Health and Wellbeing, the Chief Executive and Director of Resources (also the Council's s.151 Officer/Chief Financial Officer) and the Director of Public Health).
 - A non-statutory chief officer (the Executive Director of Growth, Environment, Transport and Community Services, the Director of Finance, the Director of Property Services, and any other postholder reporting directly to or directly accountable to the Chief Executive);

- A deputy chief officer (all other director grade posts).
- 2.2 The terms and conditions of employment applicable to officers on director grades and above are as determined by the National Joint Council (NJC) for Local Government Services ('Green Book') as amended, supplemented or superseded by decisions on conditions of service made by the Council from time to time and contained within the Council's Personnel Code. This also applies to the Chief Executive and Director of Resources with the exception of an additional provision relating to remuneration in relation to acting as returning officer (see below) and a time limited restriction on re-employment.
- 2.3 The Council's pay and grading structure is as approved by Full Council. The grade/role profile of each chief officer post has been objectively evaluated using a recognised job evaluation scheme (the Hay Group Job Evaluation Scheme). The evaluated score or grade/role profile will determine the grading level paid within the Lancashire Pay Spine. Salary packages take account of such factors as the requirements of the job, the relative size of the organisation, local and national market rates and the relationship with other posts within the grading structure.
- 2.4 Details of chief officers' basic salaries are set out below (salaries are as applicable at 1 April 2017). A structure chart identifying all posts covered by the statutory definition of chief officer posts is provided at Annex 4.

Chief Executive

The current basic salary package of the post of Chief Executive and Director of Resources/Head of Paid Service is £173,417 per annum, a single, spot salary.

This new combined role is currently being undertaken on an interim basis. The post holder has been engaged on a 12 month fixed term contract pending a permanent appointment to the role being made. To reflect the requirements of the role in leading and developing a new senior management structure, and the combined Head of Paid Service and s151 responsibilities, an additional salary payment of £20,000 has been approved, to be paid in equal monthly instalments alongside the spot salary for the evaluated role. This is in addition to reimbursement of up to £10,000 of incurred accommodation and travel expenses for the duration of the 12 month fixed term contract.

The Chief Executive also acts as Returning Officer for all Council elections for which an additional allowance is payable in relation to the overall supervision and ultimate responsibility for the conduct of Council elections.

The fee payable is calculated in accordance with a formula approved by Full Council, currently 15% of the total fees payable to Deputy Returning Officers employed by district councils (which are based on a set amount for each councillor to be elected, currently £71.25). In a contested election, the Council presently has 84 elected members. Elections take place on a 4 year cycle although by-elections may take place at other times.

Executive Directors

The current basic salary package for posts designated as Executive Director fall within a range of five incremental points between £121,274 (ED 91) rising to a maximum of £131,798 (ED 95).

Director Grades

The current basic salary package of posts within the Director grades fall within a range of three levels each comprising of five incremental points as set out below:

- Director Grade 1 (D1) - £79,661 (D1 76) rising to £87,440 (D1 80)
- Director Grade 2 (D2) - £89,172 (D2 81) rising to £96,954 (D2 85)
- Director Grade 3 (D3) - £107,111 (D3 86) rising to £117,312 (D3 90)

Officers reporting direct to the Chief Executive, Statutory and Non-statutory Chief Officers

There are currently a number of officers at head of service level who meet the statutory definition of non-statutory chief officer, or deputy chief officer, but who are not employed on director grades or chief officer terms and conditions. These posts are identified on the structure chart provided at Annex 4.

2.5 Progression through the grade is by annual increment which normally happens on 1 April each year.

2.6 Salary levels are increased in accordance with any nationally agreed pay settlement negotiated through the NJC for Local Government Services.

2.7 Other remuneration elements

2.7.1 In addition to basic salary, all chief officer posts are entitled to:

- A lease car. The current maximum contribution by the County Council, based on the annual rental payable for any vehicle, is £6,000 (£6,500 for the Chief Executive and Director of Resources); or,
- As an alternative to a lease car, or where engaged on a contract for less than three years, a chief officer may opt to receive a cash equivalent sum

of £5,300 per annum (as at 1 April 2017) (this sum is subject to annual review);

- The council operates a policy of reimbursing the membership fees incurred by a chief officer in relation to membership of a professional body;
- Official business mileage undertaken by chief officers is reimbursed at the prevailing advisory rate set by HMRC in relation to company cars. This rate is calculated on the basis that it does not include any taxable profit and no National Insurance Contribution liability as the rate is intended to reflect actual fuel costs.
- Other allowances and expenses which chief officers may claim are as set out within the list provided at Annex 3 (Allowances and Expenses). The allowances and expenses which may be claimed are as applicable to other employees of the Council.
- Chief Officers are not permitted to claim any payable enhancements as documented at Annex 2 (for example, planned overtime payments or enhancements for weekend working).

2.7.2 To meet specific operational requirements it may be necessary in exceptional circumstances for an individual to temporarily take on additional duties or responsibilities. Where this is necessary and justified a temporary supplement to the salary scale for the grade must be approved in accordance with the Council's agreed policy relating to honoraria payments and acting up allowances.

2.8 Performance related pay/bonus scheme

With the exception of progression through the incremental scale of the relevant grade, the level of remuneration is not variable or dependent upon the achievement of defined targets.

The Council does not operate a performance related pay scheme in relation to its chief officers nor does it pay bonuses or any other cash incentive.

2.9 Recruitment of Chief Officers

2.9.1 The Council has delegated the appointment and dismissal of the Chief Executive and Director of Resources (Head of Paid Service and Chief Financial Officer), Executive Directors, and the Monitoring Officer, collectively referred to as 'senior officers', to the Employment Committee. The Committee is also

responsible for the appointment of officers to the roles holding the statutory responsibility for Director of Children's Services (the Executive Director of Education and Children's Services), Director of Adult Services (the Executive Director of Adult Services and Health and Wellbeing) and the Director of Public Health. In addition to the senior officers and statutory officers listed above, the Committee is responsible on an interim basis for the appointment and dismissal of all Directors for the purpose of populating the Council's new senior management structure. This position was agreed in September 2017 and is subject to review in March 2018.

- 2.9.2 When recruiting to all chief officer posts the Council is required to comply with the statutory requirement that no appointment or dismissal (including dismissal by reason of redundancy) may proceed until all cabinet members have been notified of the proposed appointment or dismissal to allow them the opportunity to object. Where the Committee is appointing or dismissing the Head of Paid Service, the Monitoring Officer or the Chief Financial Officer the Full Council must also approve the appointment or dismissal before an offer of appointment is made or notice of dismissal is given.
- 2.9.3 Remuneration on appointment is fixed by the Employment Committee at a scale point within the evaluated grade for the post, having regard to the qualifications and experience of the successful candidate.
- 2.9.4 Relocation allowances paid to chief officers are in accordance with the Council's Relocation Allowances scheme which applies to permanent employees (and fixed term appointments of two years or more) who are appointed as a result of external advertisement, and who are obliged to relocate their place of residence as a direct result of taking up their initial appointment with the Council. The maximum amount payable under the Relocation Scheme is £6,901 net of VAT (as at 1 April 2017) plus an additional discretionary element of £2,000 is payable in exceptional circumstances. The Employment Committee have further discretion to agree to relocation allowances outside the provisions of the Relocation Scheme where they consider this to be reasonable and appropriate.
- 2.9.5 Where the Council is unable to recruit chief officers, or there is a need for interim support to provide cover for a substantive chief officer post, the Council will, where necessary, consider engaging individuals under a 'contract for service'. These will be sourced through an appropriate procurement process ensuring that the Council is able to demonstrate the maximum value for money benefits from competition in securing the relevant service. In making such assessments it should be noted that in respect of such engagements the Council is not required to make either pension or national insurance contributions for such individuals. The Executive Director of Education and Children's Services post

is currently being covered by an interim on this basis, pending a permanent appointment being made to the role. If a worker uses an intermediary personal service company the Council is responsible for assessing their tax and national insurance liability under the IR35 rules, alongside deducting and paying the correct tax.

2.10 Payments on Termination of Employment

2.10.1 The Council's policies in relation to redundancy payments and early retirement are set out respectively within its Employer Discretions Policy, Redundancy Payments Scheme, Early Retirement and Business Efficiency (Early Retirement) Policies. The Council's policy in relation to payments on termination is as summarised below:

Redundancy payments, for both voluntary and compulsory redundancy, are based upon the statutory redundancy payments scale (with effect from 1 April 2018). Under the Local Government (Early Termination of Employment) (Discretionary Compensation) (England and Wales) Regulations 2006, the Council does not apply its discretion under Regulation 5 to base any redundancy payments on an employee's actual week's pay where this exceeds the statutory week's pay limit, nor does it apply its discretion under Regulation 6 to award lump sum compensation over and above that which is set out under the statutory redundancy payments scale.

Under Regulation 31 of the Local Government Pension Scheme Regulations 2013, the Council may award additional pension of not more than £6,755 a year (as at 1 April 2017) in exceptional and justifiable circumstances.

2.10.2 The Council does not operate a policy of making any specific or general payment to its chief officers on their ceasing to hold office or to be employed by the Council but it may, where appropriate, agree to waive or pay contractual notice.

2.10.3 Any other forms of severance payment falling outside these provisions must be authorised by or on behalf of the Full Council.

2.11 Tax avoidance measures

All chief officers are remunerated via monthly salary payments. Appropriate tax and national insurance deductions are made in accordance with HMRC regulations and there are no arrangements in place for the purpose of minimising tax payments.

3. Lowest Paid Employees

- 3.1 The lowest paid persons employed under a contract of employment with the Council are employed on full time equivalent (37 hours) salaries in accordance with the minimum spinal column point currently in use within the Council's grading structure (the Lancashire Pay Spine).
- 3.2 With effect from 1 April 2014 the Council became a Living Wage employer. From 1 April 2018 all employees will be paid a minimum of £8.75 per hour, which is the equivalent of £16,881 per annum. (This excludes staff in schools, as the decision as to whether to adopt the Living Wage sits with the individual Governing Body of each school). The Council has committed to adjusting its Living Wage rate within six months of the national rate being updated, subject to Full Council approval.
- 3.3 As at 1 April 2018, the lowest grading level within the Lancashire pay spine is the Foundation Living Wage (FLW), which encompasses a single point of £16,881 per annum.

4. The relationship between the remuneration of chief officers and those employees who are not chief officers.

- 4.1 The relationship between the rate of pay for the lowest paid and chief officers is determined by the job evaluation process used for establishing the grading of posts and grade/role profiles as set out earlier in this policy statement.
- 4.2 Local authorities are recommended to publish the pay multiple between the highest paid employee and the median average earnings across the organisation. The current pay levels within the Council define the multiple between the average full time equivalent salary (excluding chief officer posts) and the Chief Executive and Director of Resources as being:

Median average 1:11.18 (figures based upon 2017 median average FTE salary of £17,772 and Chief Executive and Director of Resources' salary of £198,717 (including the additional salary payment and cash equivalent lump sum).

- 4.3 As part of its overall and ongoing monitoring of alignment with external pay markets, both within and outside the sector, the Council will use available benchmark information as appropriate. In addition, upon the annual review of this statement, the Council will also monitor any changes in the relevant 'pay multiples' and benchmark against other comparable local authorities. The Council's policy aim is for the multiple between the median salary and that of the highest paid officer to not exceed 1:16 (currently 1:11.18, based on 2017 salary data).

5. Accountability and Decision Making

The Local Authorities (Functions and Responsibilities) (England) Regulations 2000 prescribe certain functions that may not be exercised by a local authority's executive (cabinet or cabinet member) and includes the power to appoint staff and to determine the terms and conditions on which they hold office, including procedures for their dismissal. These functions must therefore be exercised by the Full Council or delegated by the Full Council to a committee or officer.

The Local Authorities (Standing Orders) (England) Regulations 2001 and Local Authorities (Standing Orders) (England) (Amendment) Regulations 2015 provide that the functions of dismissal of, and taking disciplinary action against, a member of staff must be discharged by the head of the paid service (the Chief Executive and Director of Resources) or an officer nominated by him/her. However, this provision does not apply to the posts identified in paragraph 2.1 above (chief officers) and the Council's constitution currently provides that these functions in relation to the Chief Executive and Director of Resources and some other senior posts are discharged on behalf of the Full Council by the Employment Committee (subject to the requirements set out in paragraph 2.9.1 and 2.9.2 above).

The Employment Committee was established by Full Council to discharge all functions in relation to the terms and conditions of employment of all staff including chief officers.

Section 42 of the Act provides that the function of approving an Annual Pay Policy Statement may not be delegated to a committee, therefore the function of the Employment Committee in this regard is to recommend a Pay Policy Statement to Full Council for approval.

6. Re-employment / Re-engagement of former Chief Officers

- 6.1 The Council in its role as administrator of the Lancashire Pension Fund has adopted a policy for scheme employers participating in the Lancashire Pension Fund regarding re-employment within local government or by an employer who offers membership of the Local Government Pension Scheme (LGPS). Under the policy only members in receipt of ill health pensions will be subject to abatement where, accounting for the effect of index linking, the aggregate of the pension and the earnings in the new employment exceed the rate of pay on leaving the first employment. However, any benefits built up from 1 April 2014 within the LGPS are unaffected by the effect of any re-employment.

- 6.2 In addition to the policy highlighted above, re-employed pensioners who have previously retired on redundancy or efficiency grounds before October 2006 and been awarded compensatory added years, are also subject to abatement. This abatement applies only to the benefits which are payable in relation to the added years awarded. The benefits are adjusted where the aggregate of the pension and the earnings in the new employment exceed the rate of pay on leaving the first employment. There is no discretion for the Council as administrator of the Lancashire Pension Fund on whether or not they apply this particular abatement in respect of benefits payable as a result of the previous award of compensatory added years.
- 6.3 It is a condition of the Council's Redundancy Procedure that employees wishing to apply for voluntary redundancy must agree in writing that they will not apply for future employment with the Council for a period of three years following the date of the termination of their former employment.
- 6.4 The Council will not re-engage as a chief officer under a contract for services any former employee of the Council who, on ceasing employment with the Council, was in receipt of a severance payment, a redundancy payment or a pension from the Council for a period of three years following the date of the termination of their former employment.

7. Pension Contributions

- 7.1 Where employees become members of the Local Government Pension Scheme, the Council is required to make a contribution to the scheme representing a percentage of the pensionable remuneration due under the contract of employment of that employee. The rate of contribution is set by Actuaries advising the Lancashire Pension Fund and reviewed on a triennial basis in order to ensure the scheme is appropriately funded. The rate effective from 1 April 2017 (set at 31 March 2017) is 15.1%. Although this is the certified rate, the Council has exercised an option to pre-pay this contribution as a lump sum payment. In addition, and in line with the last valuation, the Council also pay deficit recovery payments that will also be pre-paid.
- 7.2 The employee contribution rates for members of the Local Government Pension Scheme are reviewed on 1 April each year. The rates as effective from 1 April 2017 are as set out below:

<u>Pensionable pay range</u>	<u>Employee Contribution Rate</u>
Up to £13,700	5.5%
£13,701 to £21,400	5.8%

£21,401 to £34,700	6.5%
£34,701 to £43,900	6.8%
£43,901 to £61,300	8.5%
£61,301 to £86,800	9.9%
£86,801 to £102,200	10.5%
£102,201 to £153,300	11.4%
£153,301 or more	12.5%

NHS Pension Scheme (applicable to those employees who are able to retain membership of the NHS Pension Scheme) – 2015/16 through to 2018/19 rates

<u>Full Time Equivalent Salary</u>	<u>Employee Contribution Rate</u>
Up to £15,431.99	5.0%
£15,432.00 to £21,477.99	5.6%
£21,478.00 to £26,823.99	7.1%
£26,824.00 to £47,845.99	9.3%
£47,846.00 to £70,630.99	12.5%
£70,631.00 to £111,376.99	13.5%
£111,377.00 and over	14.5%

From 1 April 2017, the employer contribution rate is 14.38%.

SCP	£ (Annual)	Monthly Salary	Hourly Rate	Grades	Notes
6	15,014	1,251	7.78	Grade 1 164 - 229 NJC points	Only to be used for apprentice posts
				Grade 2 230 - 254 NJC points	
FLW	16,303	1,359	8.45	FOUNDATION LIVING WAGE (FLW)	Minimum pay level for all other posts
12 (FLW)	16,303	1,359	8.45	FLW Grade 3	
13	16,491	1,374	8.55	255 - 299 NJC points	
14	16,781	1,398	8.70		Grade 4
15	17,072	1,423	8.85		300 - 359 NJC points
16	17,419	1,452	9.03		
17	17,772	1,481	9.21		
18	18,070	1,506	9.37	Grade 5	
19	18,746	1,562	9.72	360 - 419 NJC points	
20	19,430	1,619	10.07	158 - 186 Hay points	
21	20,138	1,678	10.44		
22	20,661	1,722	10.71		Grade 6
23	21,268	1,772	11.02		420 - 479 NJC points
24	21,962	1,830	11.38		187 - 222 Hay points
25	22,658	1,888	11.74		
26	23,398	1,950	12.13		
27	24,174	2,015	12.53	Grade 7	
28	24,964	2,080	12.94	480 - 539 NJC points	
29	25,951	2,163	13.45	223 - 264 Hay points	
30	26,822	2,235	13.90		
31	27,668	2,306	14.34		
32	28,485	2,374	14.76		Grade 8
33	29,323	2,444	15.20		540 - 599 NJC points
34	30,153	2,513	15.63		265 - 313 Hay points
35	30,785	2,565	15.96		
36	31,601	2,633	16.38		
37	32,486	2,707	16.84	Grade 9	
38	33,437	2,786	17.33	600 - 659 NJC points	
39	34,538	2,878	17.90	314 - 373 Hay points	
40	35,444	2,954	18.37		
41	36,379	3,032	18.86		
42	37,306	3,109	19.34		Grade 10
43	38,237	3,186	19.82		660 - 719 NJC points
44	39,177	3,265	20.31		374 - 443 Hay points
45	40,057	3,338	20.76		
46	41,025	3,419	21.26		
47	41,967	3,497	21.75	Grade 11	
48	42,899	3,575	22.24	720 - 779 NJC points	
49	43,821	3,652	22.71	444 - 526 Hay points	
50	44,757	3,730	23.20		
51	45,727	3,811	23.70		Grade 12
52	46,646	3,887	24.18		780 - 849 NJC points
53	47,597	3,966	24.67		527 - 645 Hay points
54	48,552	4,046	25.17		
55					
56				Not Used	
57					
58	53,730	4,478			
59	54,741	4,562		Grade 13	
60	55,756	4,646		850 - 909 NJC points	
61	56,383	4,699		646 - 765 Hay points	
62	57,489	4,791			
63	58,594	4,883			
64					
65				Not Used	
66					
67	63,349	5,279			
68	64,568	5,381			Grade 14
69	65,781	5,482			910 - 969 NJC points
70	66,767	5,564			766 - 909 Hay points
71	68,109	5,676			
72	69,445	5,787			
73					
74				Not Used	
75					
76	79,661	6,638			
77	81,603	6,800		D1	
78	83,550	6,963			
79	85,495	7,125		910 - 1065 Hay points	
80	87,440	7,287			
81	89,172	7,431			D2
82	91,119	7,593			
83	93,065	7,755			

84	95,012	7,918			1066 - 1194 Hay points
85	96,954	8,080			
86	107,111	8,926			
87	109,661	9,138		D3	
88	112,211	9,351			
89	114,761	9,563		1195 - 1339 Hay points	
90	117,312	9,776			
91	121,274	10,106			
92	123,908	10,326			ED
93	126,537	10,545			
94	129,169	10,764			1340 - 2060 Hay points
95	131,798	10,983			
96	173,417	14,451		CE	

01-Apr-17

Payable Enhancements

The following pay elements replace those contained within national agreements relating to the NJC for Local Government Services (Part 3, Section 2 'Working Arrangements') and the JNC for Local Authority Craft and Associated Employees.

Element	Rate Payable	Additional information
Extra Duty - additional hours (below 37hpw)	Plain time	
Overtime - additional hours (above 37hpw)	Time + 25% Time + 33% (contractual overtime rate)	Employees graded above Scp 26 will be granted TOIL. In exceptional circumstances, see 'Planned Overtime' below. Where employees are called upon to return to work, see arrangements below.
Night Work	Time + 25%	Payable between the hours 11pm and 8am subject to start time being before 6am. See definition below.
Weekend Work	Time + 25% Time + 33% (contractual weekend rate)	Payable where required to work Saturday and Sunday as part of normal working week (i.e. not where this is overtime).
Bank Holidays and Extra Statutory Days	Time + 50% In addition, at a later date, time off with pay shall be allowed as follows: Time worked less than half the normal working hours on that day - Half Day. Time worked more than half the normal Working hours on that day - Full Day.	Payable for hours worked from midnight until 23.59 hours. See arrangements below for bank holidays that fall on a Saturday or Sunday over the Christmas and New Year period.

Shift Work – rotating shift/alternating shift	Time + 10%	Criteria to be met to qualify for payment set out below.
Split daily shifts (Split Duty)	Additional 5p per hour	See definition below.
Standby payments	<p>Full week outside normal working hours – 20% enhancement on basic weekly pay subject to a minimum payment of £125.</p> <p>For periods of less than one week:</p> <p>Mon/Fri – enhancement based on 2% of a week's basic pay or a minimum payment of £13.89 whichever is the greater.</p> <p>Sat/Sun – enhancement based on 2% of a week's basic pay or a minimum payment of £13.89 whichever is the greater for each 12 hour period of duty.</p> <p>50% enhancement on rates outlined above for work on a bank holiday or extra- statutory days.</p>	<p>Where task undertaken has been evaluated then 20% of rate for the job is payable subject to a minimum payment of £125 per week.</p> <p>If called out, contractual overtime rates apply (see above).</p> <p>Employees graded above Scp 54 (or equivalent) will not be eligible to receive standby payments.</p> <p><u>Payment for Rostered Emergency Duty Scheme</u></p> <p>Employees who are designated by services to provide a guaranteed level of emergency cover in order to meet the requirements of the national standards for the Emergency Planning function will receive standby payments where they are required to provide a full week of emergency contact duty outside normal working hours.</p>
Emergency Call Out	Overtime rates payable (see above). Minimum 2 hours' payment will apply.	
First Aid payment	<p>Designated First Aider - £104 per annum.</p> <p>Designated deputy First Aider - £52 per annum.</p>	Not payable where requirement to provide first aid forms a part of core duties as this accounted for in the grade for the job.
Sleeping-in Duty Payment	£34.68	NJC rates apply.

		Rate with effect from 1 April 2017.
Tool Allowance	£7.24 per week	Lancashire agreed term and condition, increased in line with NJC for Local Government Services pay awards. Rate wef 1 April 2017.

Planned Overtime:

A Chief Officer may approve in advance, and in exceptional recorded circumstances, the working of planned overtime for a period not exceeding six months in any financial year in respect of specified groups of employees who do not qualify for overtime payments, subject to the availability of sufficient budgetary resource.

Remuneration for planned overtime will be at the rate of time + 25% related to Scp 26, or at plain time rates relative to the employee's personal salary, whichever is the greater.

If, exceptionally, an employee is required to work planned overtime on a Statutory or Extra Statutory Holiday, remuneration will be at the rate of time + 50% related to Scp 26 or at plain time rates relative to the employee's personal salary, whichever is the greater.

Employees Called Upon to Return to Work:

Employees graded Scp 26 and below who are called upon to return to work outside their normal working hours in certain prescribed emergency situations, including the activation of intruder alarm systems, will receive a minimum payment of 2 hours at the overtime rate appropriate to the particular day, together with the payment of appropriate travelling expenses (including taxi fares, where necessary).

In non-emergency situations, normal overtime or time off arrangements will apply.

Employees paid above Scp 26 who are called upon to return to work in certain prescribed emergency situations, including the activation of intruder alarm systems, would receive a minimum payment per occasion of 2 hours at planned overtime rates. Appropriate travelling expenses are payable, with time in excess of 2 hours being calculated on the basis of the elapsed period between departure from home and arrival back home.

Night Work:

Employees who work at night as part of their working week are entitled to receive an enhancement of 25% for all hours worked between 11pm and 8am subject to the start time being before 6am.

The night work enhancement shall be payable, where appropriate, in addition to the enhanced rates of pay, for work, as part of the normal working week, on Saturday and on Sunday. The night work allowance does not apply to shift workers.

Shift Working:

'Shift Worker' means an employee who works on rotating shifts in immediate succession normally covering a period of twenty four hours or on alternating shifts either in immediate succession or overlapping but covering a portion of twenty four hours only. In both cases, the enhancement is only payable where an employee covers all shifts.

A rotating shift enhancement of 10% will be payable where:

- The total period covered by the shift is 18 hours or more;
- At least four hours are worked between 8pm and 6am;

An alternating shift enhancement of 10% will be payable where:

- The total period covered by the shifts is 11 hours or more;
- There are at least four hours between the starting time of the earliest and latest shifts;
- The number of 'normal office hour' shifts does not exceed one half (i.e. 1 in 2) of the total number of shifts. Normal office hours will be as determined by the Service concerned.
- The shift pattern must vary by at least 33.3% (i.e. 1 in 3 shifts must vary).

Split Duty:

Employees, whose normal daily duty necessitates more than one attendance with a continuous break between attendances of not less than two hours, including the normal break, shall be paid an additional 5p per hour for all hours worked during such spread over duty. The payment shall not be taken into account in calculating payments in respect of overtime and shall not apply to employees called upon to return to work or employees engaged on night work.

Bank Holidays Falling on a Saturday or Sunday over the Christmas and New Year Period:

The following arrangements will apply where a bank holiday falls on a Saturday or Sunday over the Christmas and New Year period:

- Where employees are required to work on either the bank holiday as it falls or on the substitute public holiday they will receive bank holiday pay and time off with pay at a later date (in line with the arrangements above) for working on

the actual bank holiday, and no bank holiday pay but time off with pay at a later date for working on the substitute day.

- Where employees are required to work on both the bank holiday as it falls and on the substitute public holiday they will receive bank holiday pay and time off with pay at a later date (in line with the arrangements above) for working on the actual bank holiday, and no bank holiday pay or time off with pay at a later date for working on the substitute day.

Allowances and Expenses

Type of Allowance or Expense	Amount or Rate Payable	Effective Date	Additional Information
Subsistence allowances (L.Ag)	The maximum amounts that can be claimed are as follows : Breakfast - £7.25 Lunch - £7.45 Dinner/Evening Meal - £12.34	1 April 2017 <u>Note:</u> These allowances will be increased as from 1 April each year by the annual increase in the Retail Price Index (RPI) published in the preceding November.	Subsistence allowances will be payable to employees who are prevented by their official duties from taking a meal at their home, administrative centre or establishment where they normally take their meals, and thereby incur additional expenditure. Subsistence allowances will only be payable when an individual travels outside the boundaries of Lancashire (for this purpose the boroughs of Blackburn with Darwen and Blackpool will be regarded as being within the Lancashire boundary). Receipts for the full amount paid are required in respect of all claims. See Requirements to Qualify for Meal Allowances guidance for further details.
Meal charges for residential and allied staff (resident and non-resident staff) (N.Ag)	Breakfast - £0.96 Dinner/Main Meals - £1.65 Tea - £0.46 Snack Supper - £0.76 ----- Total - £3.83 For ease of administration, these rates may be used on the following basis: Weekly - £27.05 Monthly - £117.28 Per Annum - £1,407.33	1 April 2017 <u>Note:</u> These charges are reviewed annually in line with movements in the appropriate sectors of the RPI.	The Green Book (Part 3 Paragraph 8) provides that arrangements in the former APT & C and Manual national agreements in relation to (i) free meals and (ii) accommodation and meal charges will remain in place unless and until alternative arrangements are agreed locally.

Overnight allowance (including London) (CCAP)	<p>In exceptional circumstances, where it is not possible for the County Council to make a direct booking, the actual <u>receipted cost</u> of accommodation, including breakfast, will be reimbursed subject to the following maximum limits:</p> <p>On business in London - £147.15</p> <p>On business outside London - £128.13</p>	<p>1 April 2017</p> <p><u>Note:</u> These allowances are linked to the Members' Allowance Scheme agreed by the County Council and will be updated in line with that scheme.</p>	<p>Wherever possible overnight accommodation will be booked and paid for by the County Council either directly or via Business Travel Plus. Normal subsistence allowance arrangements will apply in relation to any meals not provided.</p> <p>See Overnight Allowance guidance for further details.</p>
Expenses where employees are travelling outside Great Britain (CCAP)	<p>See Expenses where Employees are Travelling Outside Great Britain guidance for further details in respect of claiming for accommodation, travel (to/from the country) and hospitality.</p> <p>For all other expenses, including travel whilst abroad and subsistence expenses, a flat rate of £81.00 per day should be claimed and invoices/receipts need not be produced.</p>	<p>Flat rate amount effective from 1 April 2017.</p> <p><u>Note:</u> The flat rate amount will be increased from 1 April each year by the annual increase in the RPI published in the preceding November.</p>	<p>The following arrangements apply in respect of employees travelling outside Great Britain in connection with their official duties.</p> <p>For these purposes travel to Northern Ireland, the Isle of Man and the Channel Islands qualifies for payment of the allowance.</p>
Relocation allowances (CCAP)	<p>Up to a maximum of £6,901 (net of VAT).</p> <p>The maximum allowance payable to any appointed employee will be the maximum allowance operating at the date of their appointment.</p>	<p>1 April 2017</p> <p><u>Note:</u> The revised allowance will operate from 1 April each year and will be based on the annual percentage increase in the RPI as at the preceding January.</p>	<p>Heads of Service may authorise the payment of relocation allowances.</p> <p>See Relocation Allowance Scheme for further details.</p>

<p>Mileage allowances (L.Ag)</p> <p><u>Business mileage</u></p>	<p><u>Car Users</u></p> <p>45.0p per mile for the first 10,000 business miles in the tax year. 25.0p per mile for each business mile over 10,000 in the tax year.</p> <p><u>Motorcycles</u> 24.0p per mile.</p> <p><u>Bicycles</u> 20.0p per mile.</p> <p><u>Car Contract Hire Users</u> Variable. See 'Additional Information' (opposite).</p>	<p>1 July 2012</p> <p><u>Note:</u> These rates will be updated in line with any changes to the HMRC rates.</p> <p>1 April 2012</p> <p><u>Note:</u> The County Council will apply any new rates at the beginning of each calendar quarter – on 1 March, 1 June, 1 September and 1 December – in line with HMRC timescales.</p>	<p><u>Car, Motorcycle and Bicycle Users</u> Business mileage is reimbursed at the HMRC approved mileage rates.</p> <p><u>Car Contract Hire Users</u> Business mileage for car contract hire users (including all employees graded Director 1 and above on the Lancashire Pay Spine in receipt of a lease car or cash equivalent sum) is reimbursed at the HMRC advisory fuel rates for company cars, details of which can be found at https://www.gov.uk/government/publications/advisory-fuel-rates.</p> <p>This mileage rate will apply to all mileage undertaken by car contract hire users.</p>
<p><u>Training mileage</u></p>	<p><u>Car Users</u> 11.0p per mile.</p> <p><u>Motorcycles</u> 11.0p per mile.</p>	<p>1 September 2016</p> <p><u>Note:</u> The County Council will apply any new rates at the beginning of each calendar quarter – on 1 March, 1 June, 1 September and 1 December – in line with HMRC timescales.</p>	<p><u>Training Mileage</u> The training mileage rate is in line with the minimum HMRC advisory fuel rate for a petrol engine car, details of which can be found at https://www.gov.uk/government/publications/advisory-fuel-rates.</p>

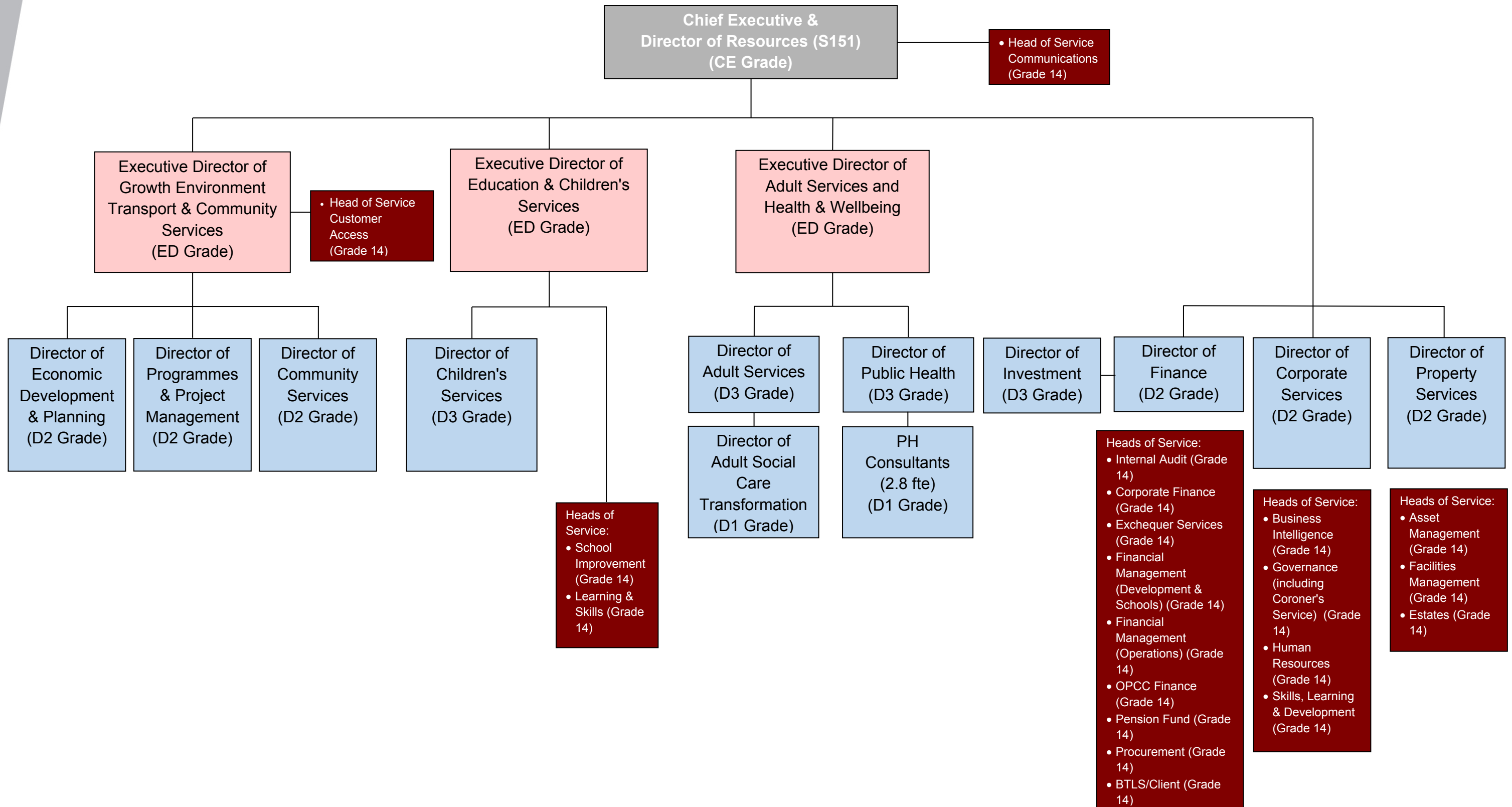
<p><u>Excess travel mileage</u></p>	<p><u>Car Users</u> 11.0p per mile.</p> <p><u>Motorcycles</u> 11.0p per mile.</p>	<p>1 September 2016</p> <p>Note: The County Council will apply any new rates at the beginning of each calendar quarter – on 1 March, 1 June, 1 September and 1 December – in line with HMRC timescales.</p>	<p><u>Excess Travel Mileage</u> Excess travel mileage is the difference in mileage between home and current workbase and home to new workbase. See Excess Travel Policy for further details.</p> <p>The excess travel mileage rate is in line with the minimum HMRC advisory fuel rate for a petrol engine car, details of which can be found at http://www.gov.uk/government/publications/advisory-fuel-rates.</p> <p>Excess travel will not be included in the calculation of the business mileage threshold for car users.</p>
<p>Travelling expenses for medical examinations (N.Ag)</p>	<p>See 'Excess Travel Mileage Rate' (above)</p>	<p>1 July 2012</p>	<p>When employees have travelled to attend medical examinations at the Authority's request reimbursement will, depending upon the mode of travel, either be at the appropriate public transport rate or at the prevailing mileage rate applicable for excess travel.</p>
<p>DSE users – reimbursement of cost of eyesight tests and spectacles (CCAP)</p>	<p>The maximum amount of reimbursement is:</p> <p>For eyesight tests - £19.90 For spectacles - £49.00</p>	<p>5 February 2014</p>	<p>See DSE Guidance on Eye and Eyesight Tests.</p>
<p>Allowances for first aid qualifications (CCAP)</p>	<p>For designated first aid representatives - £104 per annum</p> <p>For designated deputy first aid representatives - £52 per annum</p> <p>This allowance will not be payable where the requirement to hold a first aid qualification forms part of an employee's core duties and responsibilities.</p>	<p>N/A</p>	<p>Heads of Service have delegated authority to approve the number of first aiders and the payment of the appropriate First Aid allowance.</p> <p>See Guidance on the Health and Safety (First Aid) Provision.</p>

Payment of prescription charges for inoculation against Hepatitis 'B' (L.Ag)	Cost of prescription/Hepatitis 'B' inoculation.	N/A	Reimbursement of prescription charges is available for inoculation against Hepatitis 'B', on the recommendation of a General Practitioner following medical assessment, for employees whose work brings them into contact with Hepatitis 'B'.
Laundry expenses – income tax relief (CCAP)	Tax relief – claim to be submitted to HM Revenue and Customs.	N/A	Where employees are issued with items of uniform/protective clothing that the County Council expects the employee to launder at regular intervals for reasons of cleanliness, hygiene, safety or appearance, the HR Service will provide individual employees with a standard letter (on request) that they can then use to make a claim to HM Revenue and Customs for tax relief.
Long service award (CCAP)	Up to a maximum of £271.00 (excluding VAT)	1 July 2015 <u>Note:</u> This amount will be increased in value every two years in line with inflation.	See Recognition of Long Service Policy for further details.
Professional body membership fees	For employees graded Director 1 and above on the Lancashire Pay Spine: Cost of professional body membership fee, expenses and paid leave of absence in connection with membership and attendance at meetings of one professional body (not a trade union or an organisation that has the objectives of a trade union). In addition, the Chief Executive may approve the payment of one additional fee to a separate body where it is considered to be in the interest of the County Council for membership to be maintained. In	N/A	This is a former Chief Officer term and condition of employment and as such only applies to employees graded Director 1 and above on the Lancashire Pay Spine. Membership of the professional body and attendance at the meetings must be seen as being beneficial to the County Council.

	the case of the Chief Executive, the payment of an additional fee would be at the discretion of the Leader of the Council.		
Returning officer fee (CCAP)	<p>Applies to the Chief Executive only:</p> <p>The fee payable is calculated in accordance with a formula approved by Full Council, currently 15% of the total fees payable to Deputy Returning Officers employed by District Councils (which are based on a set amount for each councillor to be elected, currently £71.25).</p>	N/A	The Chief Executive acts as Returning Officer for all Council elections. This additional allowance is payable in relation to the overall supervision and ultimate responsibility for the conduct of Council elections.

Chief Officer Structure with Grades – 1 April 2018

Annex 4



Agenda Item 8

(NOT FOR PUBLICATION: By virtue of paragraph(s) 1, 3, 4 of Part 1 of Schedule 12A of the Local Government Act 1972. It is considered that all the circumstances of the case the public interest in maintaining the exemption outweighs the public interest in disclosing the information)

Document is Restricted

(NOT FOR PUBLICATION: By virtue of paragraph(s) 1, 3, 4 of Part 1 of Schedule 12A of the Local Government Act 1972. It is considered that all the circumstances of the case the public interest in maintaining the exemption outweighs the public interest in disclosing the information)

Document is Restricted

